

MONTHLY MEMBERSHIP PROGRESS REPORT

LOCATION INDIA

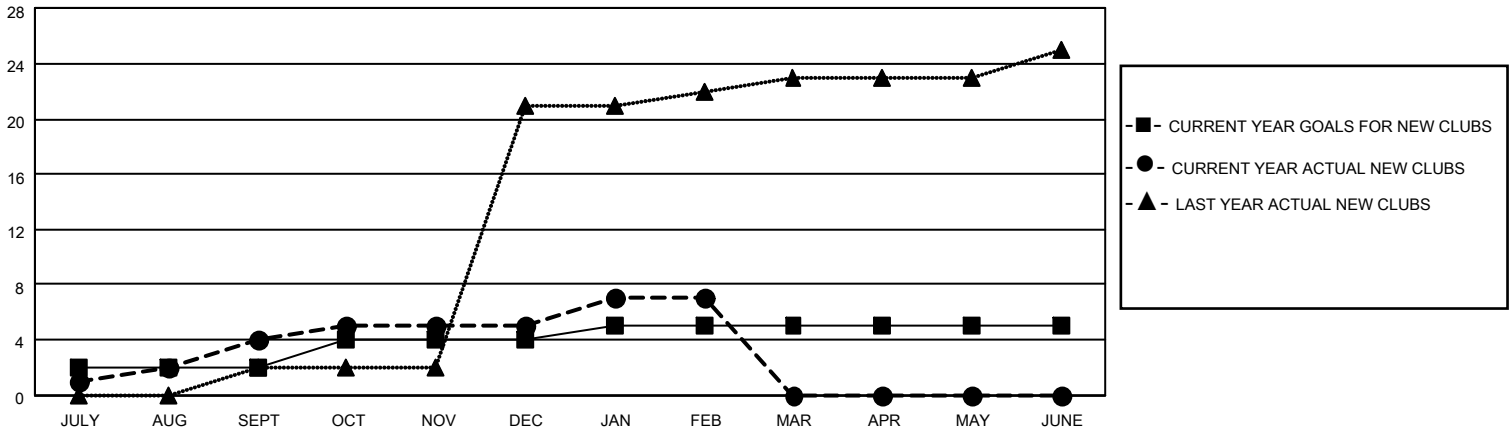
District 321A3

Results as of: 2/28/2022

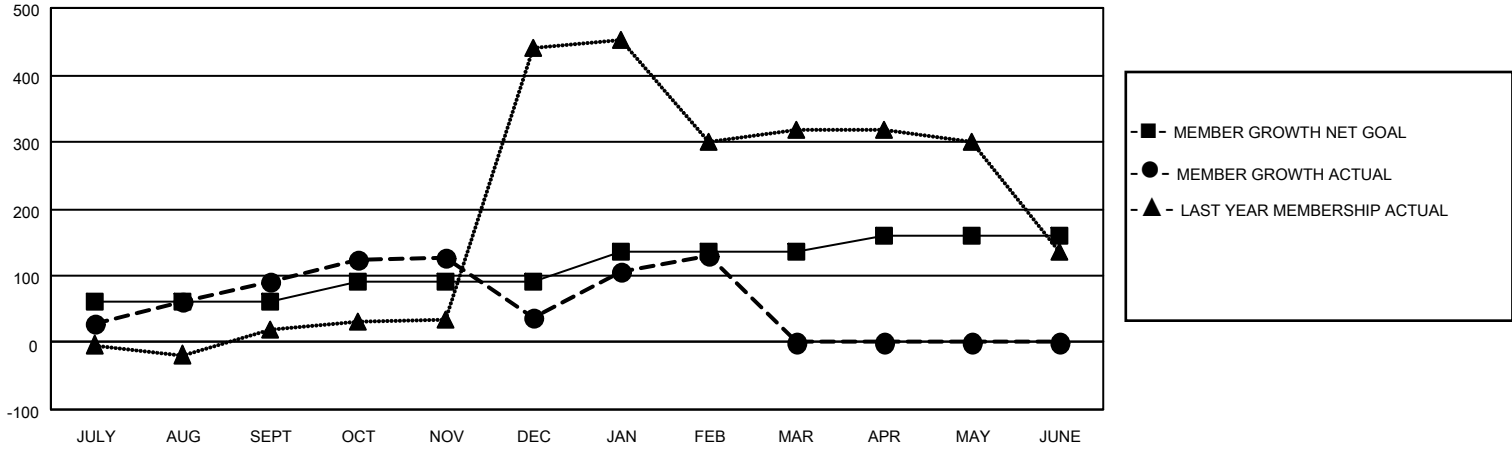
Clubs			
RESULTS FOR 2021-2022			
QUARTER	NEW CLUB GOAL	NEW CLUBS	DROPPED CLUBS
JULY/AUG/SEPT	2	4	2
OCT/NOV/DEC	2	1	2
JAN/FEB/MAR	1	2	0
APR/MAY/JUNE	0	0	0

Members			
RESULTS FOR 2021-2022			
QUARTER	MEMBER GROWTH NET GOAL	MEMBER GROWTH ACTUAL	DROPPED MEMBERS ACTUAL (including transfers)
JULY/AUG/SEPT	60	150	59
OCT/NOV/DEC	30	70	115
JAN/FEB/MAR	45	108	10
APR/MAY/JUNE	25	0	0

GOALS AND ACTUAL NEW CLUBS CUMULATIVE



GOALS AND ACTUAL MEMBERS CUMULATIVE



DROPPED CLUBS: 4

47 CLUBS OF 114 ADDED 1 OR MORE NEW MEMBERS

GENDER DISTRIBUTION

MALE	1,669 (77.05%)
FEMALE	497 (22.95%)
NON BINARY	0 (0.00%)
PREFER NOT TO ANSWER	0 (0.00%)

DROPPED MEMBERS

[CLICK HERE FOR CUMULATIVE MEMBERSHIP DATA](#)

DECEASED	4
CLUB CANCELLED	34
OTHER	146
TOTAL	184

TOTAL FAMILY UNIT MEMBERS	959
FAMILY MEMBERS PAYING HALF DUES	535